



---

---

---

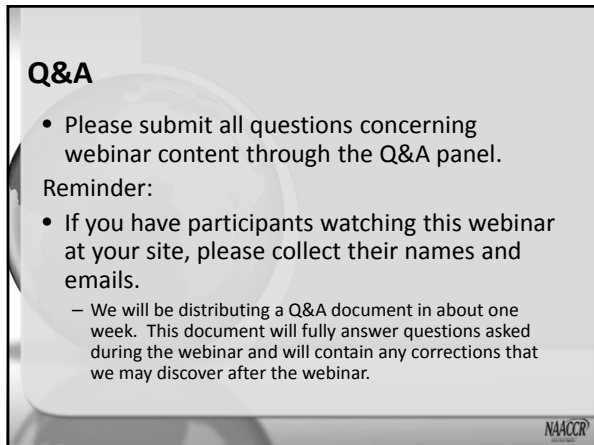
---

---

---

---

---



---

---

---

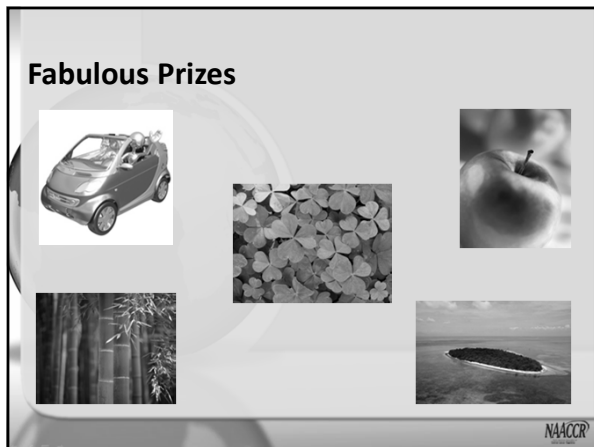
---

---

---

---

---



---

---

---

---

---


---

---

---

**Agenda**

- 2013 Data Collection Changes
- Boot Camp quizzes
- Boot Camp case scenarios



---

---

---

---

---

---


---

---

**2013 Data Collection Changes**

**Major Changes**

- Collaborative Stage Data Collection System (CS)
  - No changes for 2013
  - Version change planned for 2014
- Multiple Primary and Histology (MP/H) Coding Rules
  - No changes for 2013
  - Changes planned for 2015



---

---

---

---

---

---


---

---

**2013 Data Collection Changes**

**Major Changes**

- Hematopoietic & Lymphoid Database (Heme DB) and the Hematopoietic Coding Manual
  - Revised 2/25/13:  
<http://seer.cancer.gov/tools/heme/>
  - Abstractor Notes reviewed and modified
  - Instructions for the use of codes classified in the Heme DB as obsolete added



---

---

---

---

---

---

---

---

**2013 Data Collection Changes**  
**Major Changes**

- SEER\*Rx Interactive Antineoplastic Drugs Database (SEER\*Rx)
  - Updated 1/23/2013:  
<http://seer.cancer.gov/tools/seerrx>
  - Use for cases with diagnosis date 1/1/2013 and forward

NAACCR®

---

---

---

---

---

---

---

---

**2013 Data Collection Changes**  
**New Data Items**

Standards Volume III, Version 13 New Country and State Data Items	
Data Item Name	Item #
Addr at DX—Country	102
Addr Current—Country	1842
Birthplace—Country	254
Birthplace—State	252
Followup Contact—Country	1847
Place of Death—Country	1944
Place of Death—State	1942

NAACCR®

---

---

---

---

---

---

---

---

**2013 Data Collection Changes**  
**New Data Items**

- Secondary Diagnosis 1 – 10
  - ICD-10-CM code for preexisting medical conditions, factors influencing health status, and/or complications
- Comorbid/Complication 1-10
  - ICD-9-CM codes for preexisting medical conditions, factors influencing health status, and/or complications

NAACCR®

---

---

---

---

---

---

---

---

**2013 Data Collection Changes**  
**Discontinued Data Items**

Standards Volume III, Version 13 MP/H Data Items	
Data Item Name	Item #
Date of Mult Tumors Flag	439
Ambiguous Terminology DX	442
Date Conclusive DX	443
Mult Tum Rpt as One Prim	444
Date of Mult Tumors	445
Multiplicity Counter	446
Date Conclusive DX Flag	448

NAACCR

---

---

---

---

---

---

---

---

---

---

**2013 Data Collection Changes**

- NAACCR Version 13 Data Standards & Data Dictionary  
 – <http://www.naaccr.org/StandardsandRegistryOperations/Volumell.aspx#>
- NAACCR 2013 Implementation Guidelines  
 – <http://www.naaccr.org/LinkClick.aspx?fileticket=WlmSkHUgKrl%3d&tabid=126&mid=466>

NAACCR

---

---

---

---

---

---

---

---

---

---

**2013 Data Collection Changes**

- FORDS 2013  
 – <http://www.facs.org/cancer/coc/fords/fords-manual-2013.pdf>  
 – Released 12/18/2012
- SEER Program & Coding Staging Manual 2013  
 – <http://seer.cancer.gov/tools/codingmanuals/>  
 – Released 2/28/2013

NAACCR

---

---

---

---

---

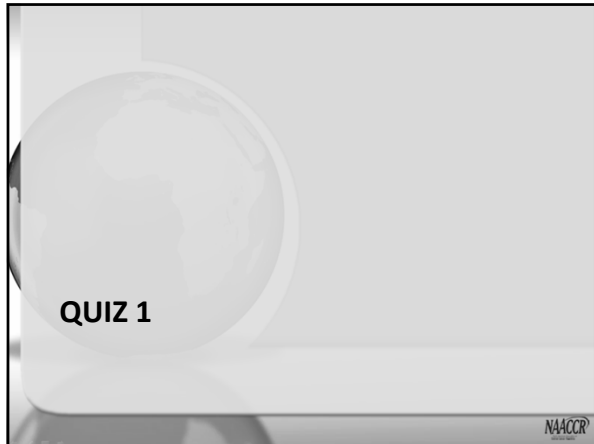
---

---

---

---

---



---

---

---

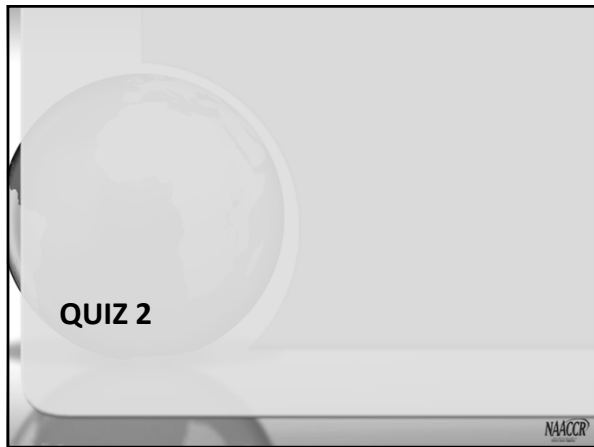
---

---

---

---

---



---

---

---

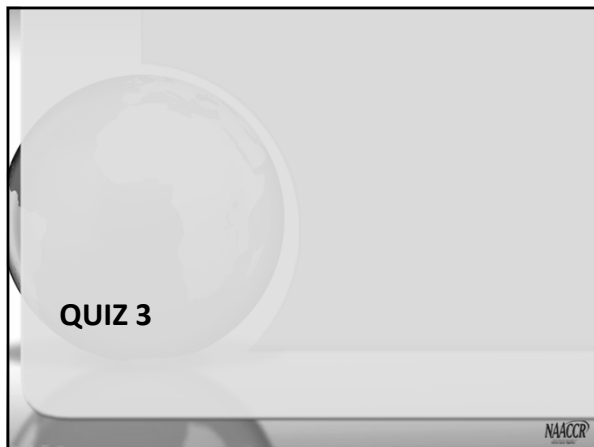
---

---

---

---

---



---

---

---

---

---


---

---

---

**Text**

- Justify what you have coded!
- Based on your text you should be able to code
  - Certain demographics
  - Class of Case
  - Primary site and histology
  - Collaborative Stage
  - Treatment
- Explain anything unusual about your case.



---

---

---

---


---

---

---

---

**QUIZ 4**



---

---

---

---


---

---

---

---

**QUIZ 5**



---

---

---

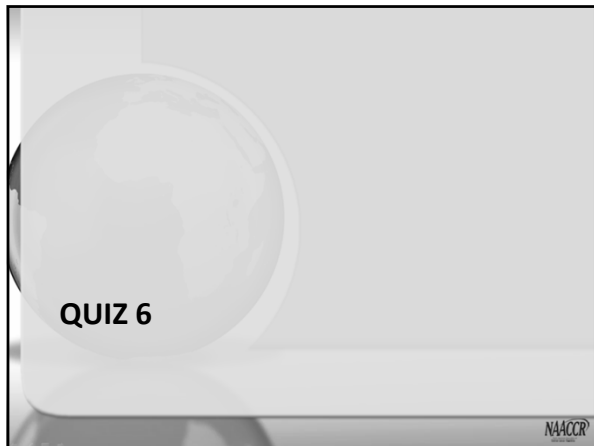
---

---

---

---

---



---

---

---

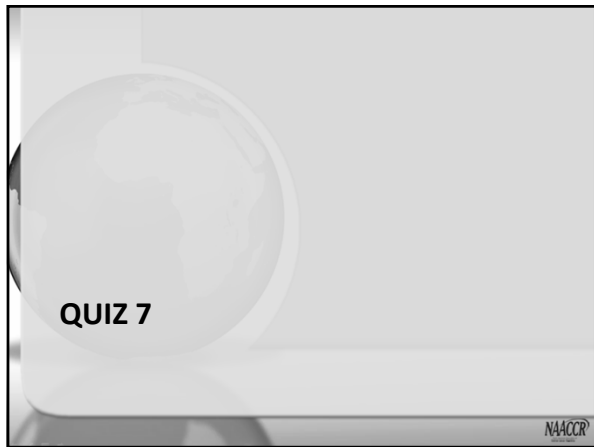
---

---

---

---

---



---

---

---

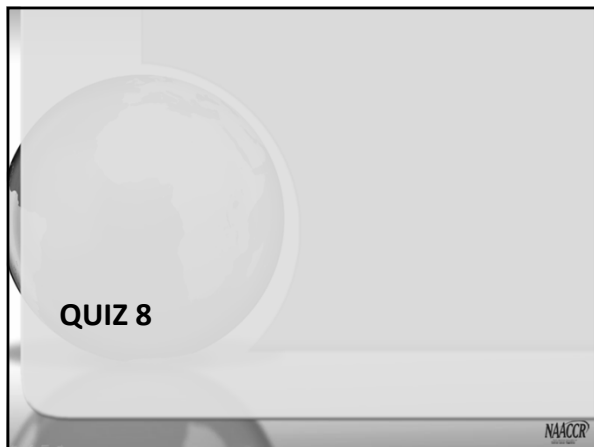
---

---

---

---

---



---

---

---

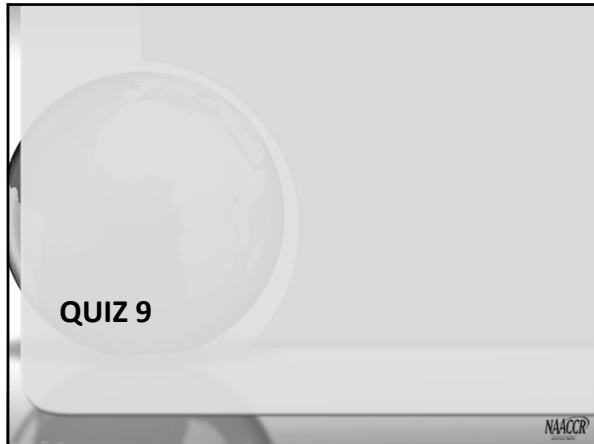
---

---

---

---

---



---

---

---

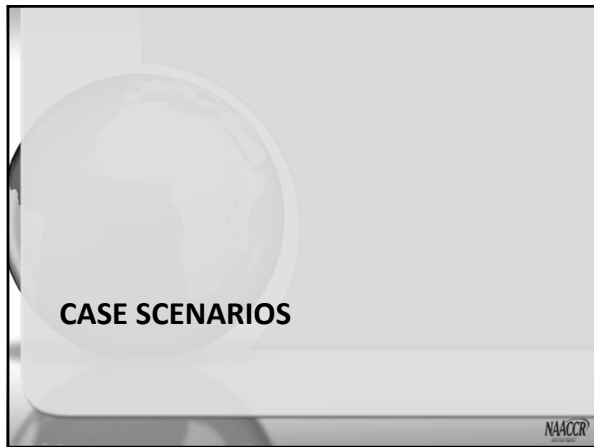
---

---

---

---

---



---

---

---

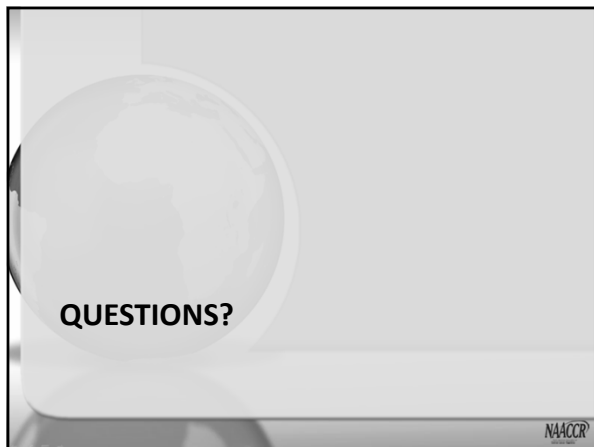
---

---

---

---

---



---

---

---

---

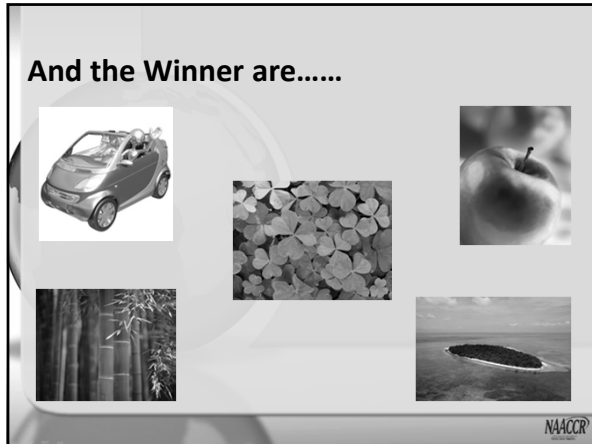
---

---

---

---





---

---

---

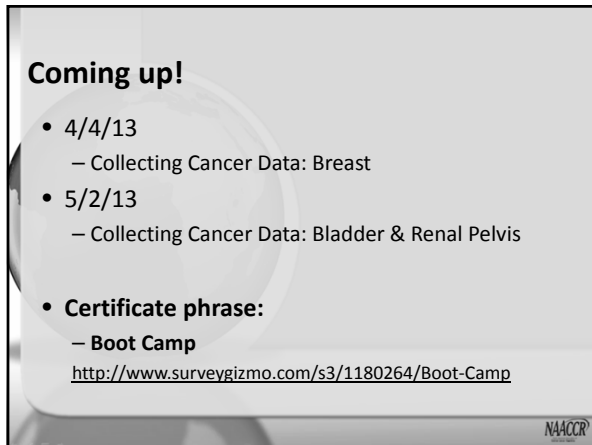
---

---

---

---

---



---

---

---

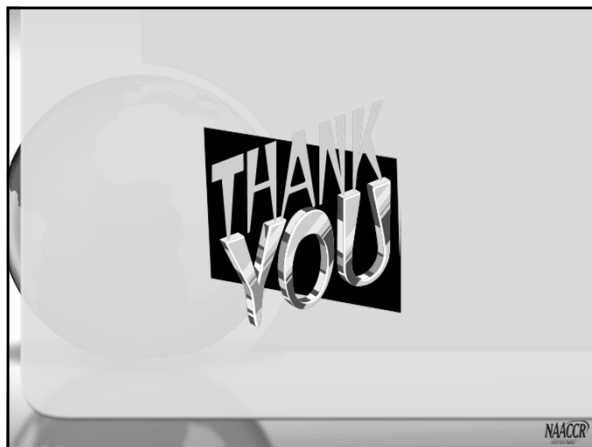
---

---

---

---

---



---

---

---

---

---

---

---

---