

Acute Lymphocytic Leukemia in California

Acute lymphocytic leukemia is a white blood cell cancer in bone marrow. It is estimated that there will be 330 women and 400 men diagnosed with acute lymphocytic leukemia in California (CA) in 2014 and that 100 women and 135 men will die from the disease.

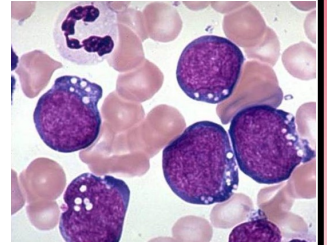
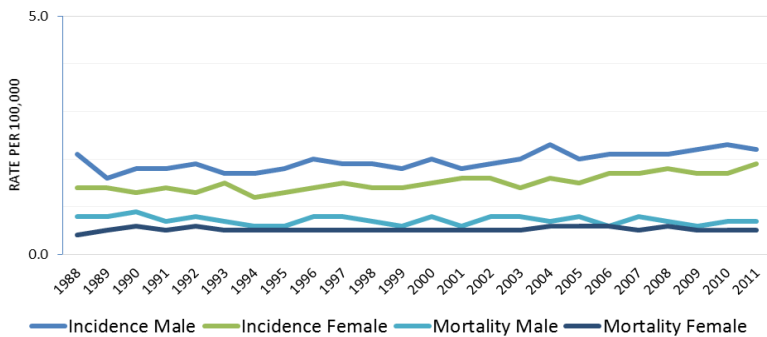


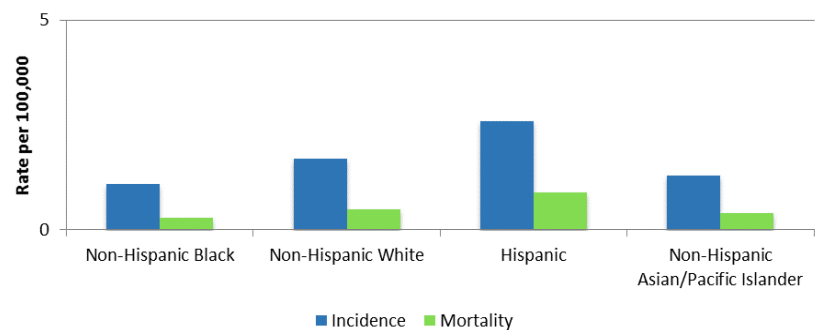
Figure 1. Age-adjusted acute lymphocytic leukemia incidence and mortality rates in California, 1988-2011



Overall, invasive acute lymphocytic leukemia has been relatively stable in both males and females since 1988 with only a slight increase throughout the time frame. Mortality rates, on the other hand, have been decreasing slightly since 1988 in males. However, in females the trends have been increasing and decreasing throughout the years and most recently since 2005 on a decreasing trend (See Figure 1).

Incidence rates between 2007 and 2011 were highest among Hispanics (2.6 per 100,000), followed by non-Hispanic Whites (1.7 per 100,000), non-Hispanic Asian/Pacific Islanders (1.3 per 100,000), and non-Hispanics Blacks (1.1 per 100,000). Racial/ethnic mortality rates are very similar; highest among Hispanics (0.9 per 100,000), followed by non-Hispanic whites (0.5 per 100,000) and non-Hispanic Asian/Pacific Islanders (0.4 per 100,000), and was lowest among non-Hispanic blacks (0.3 per 100,000) (See Figure 2).

Figure 2. Five-year age-adjusted acute lymphocytic leukemia incidence and mortality rates by race/ethnicity in California, 2007-2011



Nearly all cases are diagnosed at a late stage (99.7 percent), when the cancer has metastasized to other organs. When diagnosed at this stage, five-year relative survival, a measure of the likelihood that a cancer patient will survive their cancer for at least years after diagnosis, is 62.1 percent (See Figure 3).

Figure 3. Stage distribution and five-year relative survival by stage at diagnosis for acute lymphocytic leukemia, California, 2002-2011

Stage at Diagnosis	Stage Distribution	Five-Year Relative Survival
Localized (Confined to Primary Site)	0%	n/a
Regional (Spread to Regional Lymph Nodes)	0%	n/a
Distant (Metastasized to Other Organs)	99.7%	62.1%
Unknown Stage	0.3%	n/a

